

STAGE PROGRAM

In receipt of Visitor registration at WEB

CPD Recognition

* For details please see our website.

24 Fri

14:30~16:30

Capacity
400 Persons

* First comes first served. Thank you for your understanding.

SYMPOSIUM Looking at the coming 10 years ~ [current and future of rebar]

Panel discussion of Experts and Participants in various fields will be held.

PROGRAM

- Keynote Speech: (Tentative Title) Measures to be promoted by the Ministry of Land, Infrastructure and Transport and Tourism, Construction Market Development Division
- Symposium
 - (1) Main subject explanation: Mr. Izumi Nobuyuki (Professor of Chiba University Graduate School, Engineering Research Institute, Faculty of Science and Engineering, Construction Course)
 - (2) Main subject explanation by various panels
 - From the standpoint of reinforcing rebar Maker: Mr. Oohashi Shigenobu (Ordinary Steel EAF Association, Head of Rebar Bars Technical Steel Committee, Tokyo Tekko Company Ltd.)
 - From the standpoint of Designer: Mr. Moritaka Hideo (One company) Chairman of Japan Structures Consultants Association (Company Ltd.) Yasui Construction Design Office.)
 - From the standpoint of General Construction Industry: Mr. Kusachi Yuichi (One company) Japan Federation of Construction Contractors, Taisei Corporation (Company Ltd.)
 - From the standpoint of Reinforcement Industry: Mr. Akazawa Eitoku (Public Company) Japan Rebar Contractors Association, Youth Department Representative. (Limited Company) Akazawa Kogyo Ltd.)
 - From the standpoint of Joint Industry: Mr. Adachi Masaki (Japan Reinforcing Bar Joints Institute, Chairman of Youth Group, Taiyo Asetsu Company Ltd.)
 - From the standpoint of Inspection Industry: Mr. Maekawa Shinichi (Director of Reinforcing Bar Joint Inspection Industry Association. (Company) Dantekku Company Ltd.)
 - (3) Discussion
 - (4) Conclusion: Mr. Izumi Nobuyuki

COORDINATOR OR PANELISTS

Coordinator



Mr. Izumi Nobuyuki

Panelists



Mr. Oohashi Shigenobu



Mr. Moritaka Hideo



Mr. Kusachi Yuichi



Mr. Akazawa Eitoku



Mr. Adachi Masaki



Mr. Maekawa Shinichi

The 2nd TETSU - 1 GRANDPRIX

Determine the best craftsman!
Watch with close attention to the high skill level for the next generation of the industry!

We will hold the 2nd technical competition of rebar construction work sponsored by Japan Rebar Contractors Association on the stage of the Exhibition Hall.



25 Sat

10:00~17:00

SPECIAL DISCOUNT OF REBAR INDUSTRY CHARITY AUCTION

12:00~

Selling products which are recommended by various Exhibitors! Implement the industry's first auctions. Get tools for works, products for on-site working, uniforms and even large products such as processing machines by the auctions!

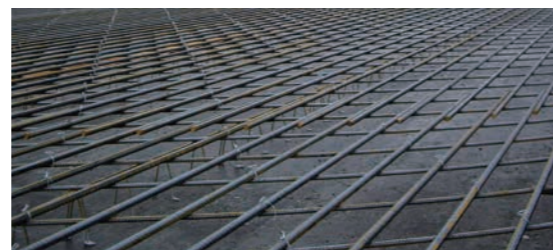


* For other contents, please visit our website.

REBAR TYING RELAY CONTEST

14:00~

Relay contest that enables competitively rapid joining/rebar tying of slab mesh. Compete with skill and speed! Please come and enjoy brilliant skills!



The [REBAR] Exhibition that supports in an invisible place of our life.

REBAR EXPO 2017

World's first [REBAR] Exhibition

Date 2017 11/24 Fri 25 Sat 26 Sun
10:00~17:00(Final date will be until 16:00)

Place MAKUHARI MESSE
International Exhibition Hall 9

Special Sponsors



合同製鋼グループ

合同製鋼株式会社

合同製鋼株式会社

合同製鋼株式会社



TTK

MAX

東亜建設工業株式会社

TOYO

Supported by

Ministry of Land / Ministry of Labor, Health and Welfare / Ministry of Economy, Trade and Industry / Ministry of Foreign Affairs / Chiba Prefecture / Japan Society of Civil Engineers / Architecture Institute of Japan / The Japan Civil Engineering Consultants Association / Japan Association of Architecture Firms / Japan Structure Consultants Association / Japan Federation of Construction Contractors / Nationwide Construction Manufacturers Association / Japan Reinforcing Bar Joints Institute / General Foundation Construction Promotion Funds / Construction Industry Specialists' Association / Fuji Education Training Center

Co-sponsored by

Japan Rebar Contractors Association
Japan Reinforcing Bar Joints Institute
Federation of Japan Pressure Welding Cooperatives
Ordinary Steel EAF Association



Transmit All about rebar to All people involved in rebar

As its title REBAR EXPO, the exhibition where "you will know all about rebar in Japan if you visit" aims to present comprehensive exhibition on overall rebar. We transmit them to the society for further developments of the rebar industry, to be recognized socially and make people in the industry happy.



We would like to invite you to participate this Exhibition. We look forward to your visit.

HOW TO ACCESS

BY TRAIN

- JR Keiyo Line – Kaihin Mukahari Station
Aprox. 5 minutes by walk
(30 minutes from Tokyo Station. 12 minutes from Soga Station)
- JR Soubu Line・Keisei Line – Makuhari Hongo Station
(Aprox. 40 minutes from Akihabara Station)
By bus to MAKUHARI MESSE CENTRAL: Aprox. 17 minutes

BY BUS

- Aprox. 40 minutes from Narita Airport by highway express bus
Keisei bus website: <http://www.keiseibus.co.jp/>

■ For Visitors Registration * After answering the below all survey, please submit together with your two name cards. Those who do not bring the name cards, please answer directly as below. * For Students and the general public, please answer the survey as below.

Name			
Company			
Department			Title
Address	〒□□□ □□□□		
TEL			FAX
E-mail			

Survey * Please answer all questions.

Q1. Please select types of the applicable industry

- ① Government Offices/Organizations
- ② Designers/Consultants
- ③ General Construction Industry
- ④ Reinforcement Industry
- ⑤ Reinforcing Bars Joint Industry
- ⑥ Inspection Industry
- ⑦ Other Professional Construction Industry
- ⑧ Other Makers

* Those who selected the above check list, please choose from 1-6 as follows

- ① Raw-materials Maker
- ② Machines Maker
- ③ Tools Maker
- ④ Auxiliary Materials Maker
- ⑤ Software Maker
- ⑥ Others

- ⑨ Trading Companies
- ⑩ Students or Generals
- ⑪ Others/PRESS

Q2. Where did you know this Exhibition Opening Information? (Multi selections are possible)

- ① Exhibition Homepage (HP)
- ② Exhibitors HP
- ③ Invitation of the Executive Committee
- ④ Invitation of the Exhibitors
- ⑤ Emails of the Executive Committee
- ⑥ Emails of the Exhibitors

- ⑦ Introduction of Newspapers/Magazines/Posters
- ⑧ WEB
- ⑨ Others

Q3. Please fill where you are living (city and country).

INVITATION Please bring this invitation together with your two name cards and show them at the Reception Desk.

**MUST-SEE FOR THOSE INVOLVED
IN THE INDUSTRY!**

GATHERING APPROXIMATE 130 COMPANIES, ORGANIZATIONS RELATED TO REBAR! BE ABLE TO SEE, LISTEN AND EXPERIENCE REBAR ADVANCED TECHNOLOGY!

LIST OF PARTICIPATING COMPANIES (In Japanese Syllabary Order)

* Exhibitors names are listed on public.
* Co-Exhibitors and Support-Plans Companies are also included.

- A**
Architect Company
Art Space Company
IKK Company Ltd.
Aikoh Corporation
Aichi Steel Company
Aiwa Tekkou Company Ltd.
Akazawakikai Company Ltd.
Akitec Company Ltd.
Asaden Gear Company
Asahi Industries Co., Ltd.
Ag Ajikawa Corporation
Taiyo Nut Industry Co.,
Ikura Tools Co.,
Itoh Iron & Steel Co., Ltd.
Inui Sangyo Co., Ltd
Iwatani Industrial Gases & Machinery Corporation
Iwatani Corporation
Winfirst Co., Ltd.
Ueta Denki Co., Ltd.
Uchimura Group (Construction)·OMG Co., Ltd.
EIKO Machine Center Co., Ltd
ECOWEL Assciaiton
SMFL Rental Company Limited
Otani Steel Corporation
Obayashi Corporation
Okabe Company Ltd.
Okabe Industry Company Ltd.
Okinawa Cotek Co., Ltd.
Ogura Co., Ltd.
- KA**
Kanto Pressure Welding Cooperation
Kishiwada Steel Co., Ltd
Kitakyu Seigyo System Company
CADAC
Kyushu Bearing Co., Ltd.
Kyohei Steel Ltd. Company
Kyoudo Engineering Co., Ltd.
Kyoto Spacer Co., Ltd.
Kyowa Concrete Industry Co., Ltd.
Kinryou Electric Co., Ltd.
Kusagaki Kogyo Co., Ltd.
Keishin Kyougyo Co., Ltd.
Neturen Co., Ltd.
Godo Steel Ltd.
- SA**
CYBERDYNE INC.
Satel Rebar Industry Co., Ltd.
Sapporo Sansui Inc.
Sato Co., Ltd.
Sanei Trading Co., Ltd.
Sangyo Press Co., Ltd.
Sangen Co., Ltd.
Sanyo Electric Co., Ltd.
Institute CBI Law Association
JFE Bars & Shapes Corporation
JEM Co., Ltd
JUST Ltd. Co.,
Jonan Steel Corporation
Shinko Industries Co., Ltd.
Steek Plus Inc.
Sunouchi Corporation
Sumitomo Heavy Industries Ltd.
Seibu Steel Company
National Pressure Welding Cooperative Association
- TA**
DAIA Corporation
Dai-Ichi High Frequency Co., Ltd.
Taisei Housing Co., Ltd.
Daido Kogyo Inc.
Yamamoto Kogyo Co., Ltd.
Takunan Steel Corporation
Takei Industries Ltd.
Tawa Corporation
Chuo Sangyo Co., Ltd.
Chiyoda Steel Co., Ltd.
Tsutsui Kogyo Co., Ltd.
DMA Sekisan Co., Ltd.
DBS Co., Ltd.
Dinetwork Co., Ltd.
Debar Processing Service
Tekko Shinbun Corp.
Tokai Metal Co., Ltd.
Tokyo Gas Chemical Co., Ltd.
Tokyotekko Co., Ltd.
Sanei Saijo Co., Ltd
Toyo Kensetsu Kohki Co., Ltd.

Kyowa Co., Ltd.
Koryo Kenpan Co., Ltd.

Tokai Co., Ltd.
Topy Industries Limited
TOMTECH Co., Ltd.
Toyota Forms Co., Ltd.

NA
Nankai Steel Co., Ltd.
Nishio Rent All Co., Ltd.
West Japan Wire Mesh Industry Co., Ltd.
Japan Housing Foundation Reinforcing Bar Association
Millennium Base Association

HA
Housemesh Co., Ltd.
HAKUSAN-MFG.Co., Ltd
Handa Machinery Co., Ltd.
Business Solution Reliance Co., Ltd.
PCS Co., Ltd.
Hitachi Machinery Co., Ltd.
Philip Morris Japan Limited Co.,
FORUM8 Co., Ltd
Fukoku Oil Co., Ltd.
Fujisaki Shoukai Co., Ltd.
Fujitsu Limited Co.,
Fuyo Co., Ltd. Co., Ltd.
VSL Association Co., Ltd.
Hokuetsu Sangyou Co., Ltd.
Hokuetsu Tanbatsukuru Co., Ltd.
Hokuetsu Metal Ltd.

MA
Matsui Kyougyo Co., Ltd.
MAX Co., Ltd.
MIKI Co., Ltd.
Sumitomo Mitsui Finance and Leasing Co., Ltd.
Mitsuboshi Metal Industry Co., Ltd.
Meiko Shoji Co., Ltd.

YA
Yasumori Kikoh Co., Ltd.
Yusei Kizai Co., Ltd.
Yokohama Galvanizing Co., Ltd.

WA
Watanabe Limited Co.,

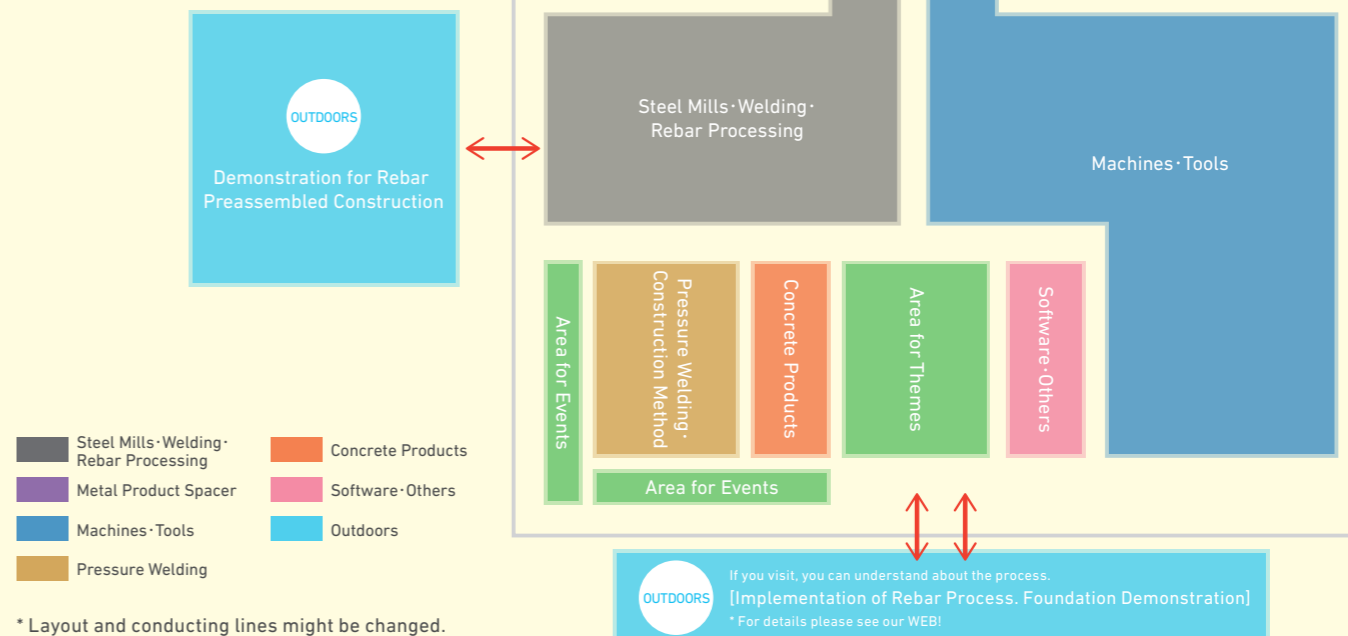
* Please note that the above companies names are translated into English for reference only!

On September 15, 2017.

LAYOUT OF THE EXHIBITION HALL

REBAR EXPO 2017

MAKUHARI MESSE
International Exhibition Hall 9



FOR STUDENTS·FAMILIES ENJOYMENT PICK UP CONTENTS

REBAR EXPO HUGE MONUMENT ~ AREA FOR THEMES ~

Near entrance of the Hall

Huge monument with size apr. Width 17m x Depth 17m x Length 5m (estimated) made by rebar will appear at the entrance of the Hall. Together with this monument, it shows the transition of rebar industry! Please experience the industry's advancement.



EXHIBITION OF REBAR PROCESSING ART

11:00~ on the stage and Permanent Exhibition

We will display the art works made by rebar, cooperated by Arts Universities, College and Rebar Processing Companies on the stage of the Exhibition Hall. Students and rebar Craftmen can expertise in the world of art rebar.



REBAR QUIZ FOR HIGH SCHOOL STUDENTS DETERMINATION BATTLE FOR KING ~ REBAR LABO ~

13:00~ on the stage

High school Students and those involved in construction can participate at basic knowledge about rebar! Who knows the most about rebar! If you see you may be rebar professor!?

Kids also can learn! enjoy! Must-see plans for Families

REBAR EXPO Tours·Green Day Corner

Practice tours which can learn rebar industry on-site through the Exhibition Hall, as a vocational experience content for Kids. Families with children also can get Green Day tickets as present at Visitors Benefit, which is for playing and enjoying on Sunday only.

For latest information please check our website!



Official Homepage

- Information such as Exhibitors will be updated frequently.
- Pre-registration is also possible at WEB!

FREE ENTRANCE!

In reception of pre-registration

SYMPOSIUM
[Let's see current and future of Rebar!]

Let's participate and review the latest rebar technology and information

Date November 24 (Friday), open on the stage at 14:30~16:00

Capacity 400 persons. Number of persons depends on deadline.

* For other details please see the back side



Register for Symposium